

OCTOBER 1

Thursday, At - A - Glance

TIME	FOOD	SPEAKER	TOURS	SESSIONS	EXHIBIT HALL	DINING	EVENTS
7:30a	Breakfast	Registration			Exhibit Hall Open		
8:00	Buffet in	7:00-5:00			7:30-7:00		
8:30	Exhibit Hall	Keynote					
9:00	7:30-9:00	Speaker			Bookstore Open		
9:30		8:30-10:00			7:30-7:00		
10:00	Refreshment						
10:30			TOURS	SESSION I			
11:00			T1: Furman U 12:30-5:30	10:30-12:00			
11:30	Lunch		T2: Biltmore 10:30-6:00	C1-C5			
NOON	Buffet in		T3: Hubbell 10:30-12:30				
12:30	Exhibit Hall		T4: ICAR 2:00-5:00				
1:00	11:30-1:30		T5A: BMW Plant 10:30-1:00				
1:30			T5B: BMW Plant 12:30-3:00	SESSION II			
2:00			T6: G'ville Schools 2:00-5:00	1:30-3:00			
2:30			T7: Force V 1:45-5:15	C6-C10			
3:00			T8A: FLW 10:30-12:30				
3:30	Refreshment		T8B: FLW 1:30-3:30	SESSION III			
4:00				3:30-5:00			
4:30				C11-C15			
5:00				Architecture	SAR Exhibitor		
5:30				for Ministry	Reception		
6:00				&	5:00-6:30		
6:30				CRAN Forum			
7:00				&		Dining By	
7:30				AAH Knowledge		Design	
8:00				Community		7:00-9:00	
8:30				5:00-6:00			
9:00							
9:30							Emerging
10:00							Professionals
10:30							Reception
11:00							9:30
11:30							



SEMINARS

Thursday, October 1



KEYNOTE ADDRESS: DRIVING THE FUTURE

8:30-10:00am DAVID P. LATHROP

Culture, transformation & buildings in dicey times...a perspective on the role of space in organizational change and market chaos. As practitioners, we know space can be a mechanism to leverage organizational change AND to save money by skillfully embracing the organizational issues a major project can offer, especially in a time such as this. Why, in fact, do we have buildings at all? An effective rethinking of the new "why" must balance history with a new focus on organizational change, distributed work, culture, and human effectiveness. What have we learned, and where is it going, now? And, how do we learn to measure what matters; so we are speaking the language of the new business climate? In the end, it is a deep truth that space and culture are connected... always have been, always will be. Engaging users in an articulation and creation of a new system where buildings reflect the future.... a future that is upon us now... is the path forward. Using the "building" moment to actively surface and engage the behavioral, cultural and financial realities that define organizational change is the challenge. The trick is to use curiosity about what's possible to overcome people's fear of what they may see as inevitable.

SESSION I

TH
C1

SUSTAINABLE BY EXAMPLE: A CASE STUDY - THE AIANC CENTER FOR ARCHITECTURE AND DESIGN, 10:30-NOON FRANK HARMON, FAIA



Just as the National American Institute of Architects has committed to "Walk the Walk" to lead the sustainable evolution, so must the AIA's state components. Using the recent competition-winning design for the AIA North Carolina headquarters to be built in downtown Raleigh as a case study, this presentation will demonstrate how architects can – and must – take an innovative, leadership role in drastically reducing our buildings' carbon footprints. It will also demonstrate how urban architecture can enhance the urban landscape without harming the environment by educating clients and producing buildings that reduce energy consumption and emissions through both low-tech and high-tech solutions; that reduce the "heat island" effect in center cities; that use environmentally sustainable materials, including recycled materials wherever possible, that encourage density and "walkability" and that ultimately make the land they inhabit better than they found it.

SESSION I

TH
C2

THE POWER OF DRAWINGS TO INFLUENCE AND TRANSFORM THE PUBLIC REALM, 10:30-NOON LYNN CRAIG, AIA, RIBA & CHRIS STONE

Examine a chronicled Case Study of the revitalization of downtown Greenville from 1960 to present day. Discover the step-by-step recording of city improvements through the eyes of of the President of the City of Greenville Convention and Visitors Bureau and an urban design architect/illustrator. Learn how to make connections with city authorities to transform their visions into "place-making illustrations". Re-awaken your ability to illustrate and understand the power of cityscape drawings to influence and transform your community. The architect's hand and the architect's eye are unique to our profession; we should not overlook this special talent. The program is heavily illustrated and will conclude with a recent Case Study demonstration of the collaborative method completed for the City of Austin, Texas.

SESSION I

TH
C3

SIGNIFICANT CHANGES OF THE 2006 INTERNATIONAL BUILDING CODE: IMPROVEMENT OF REGULATORY APPROVAL, 10:30-NOON VAUGHN P. WICKER, CBO

Participants will gain an understanding of the new requirements of the building code adopted throughout the region, and how to apply them as a part of the design process. The discussion will focus on the significant additions, modifications and clarifications to those code provisions, as well as those important changes to basic code concepts. The participants will benefit from this session by developing a working knowledge of the requirements allowing them to be applied in the design process prior to projects being put out for bid. This means fewer change orders and increases the chances of keeping projects within budget. Additionally, proper design prior to projects being submitted for permits dramatically improves the regulatory approval process.



SEMINARS

Thursday, October 1

SESSION I

TH C4 GREENING WHAT YOU GOT: LEED CERTIFICATION FOR HISTORIC CAMPUS BUILDINGS - EASIER THAN YOU MIGHT THINK, 10:30-NOON

MICHAEL REID, AIA, LEED AP & SUMEGHA SHAH, ASSOC. AIA, LEED AP

As more college and university presidents sign the Presidents Climate Commitment with the goal of carbon neutrality, one of the biggest challenges to achieving this goal is not new construction but what to do with existing building stock especially buildings that have historic significance. The presentation and discussion will be an interactive and open forum to discuss overall sustainable goals, the LEED certification process for renovation in historic buildings and the best way to help clients meet their sustainable commitments. We will also discuss the real costs and dispel some of the myths of LEED certification. The session will focus on the renovation and LEED certification of the Anna Young Alumnae House at Agnes Scott College in Decatur Georgia as a case study to guide the discussion. Participants will gain a better understanding of how to approach sustainable renovation projects with the primary goal of reduction of energy and water use while maintaining the character and quality of historic buildings. Participants will also gain practical knowledge about the best areas to pursue for LEED certification.

SESSION I

TH C5 RED SPECS-GREEN SPECS: NAVIGATING SUSTAINABLE PRACTICES IN WRITTEN CONSTRUCTION DOCUMENTS, 10:30-NOON NINA M. GIGLIO ASSOC. AIA, CSI, CCS, SCIP

This session will discuss the importance of understanding good sustainable practices and their incorporation into the written construction documents. The presentation will explore the evaluation and use of manufacturers green guide specifications in a project manual. We will examine the costs and benefits of incorporating sustainable practices into projects and best practices of working with a sustainability consultant. The presentation will include a discussion of various common rating systems and methods of incorporation of related requirements into specifications. Finally, the discussion will touch on coordination of specifying sustainable practices and high performance buildings.

SESSION II

TH C6 A GREEN PATHWAY TO CLASSROOM ACOUSTICS: LEED FOR SCHOOLS 2009 ACOUSTICS PREREQUISITE AND CREDIT EVOLUTION AND FUTURE DIRECTION, 1:30-3:00pm DANIEL C. BRUCK, PH.D., LEED AP

Participants will be able to interpret the acoustical requirements in LEED for Schools 2009, and develop cost-effective strategies for compliance. Participants will be able to incorporate acoustical quality, sound isolation, and noise control into sustainable design practices to improve overall quality and functionality for instructional spaces. Participants will be able to utilize materials and design that serve an acoustical function as well as contribute to the requirements for LEED credits. In October 2008, USGBC voters approved an updated acoustics prerequisite and credit for inclusion in the LEED for Schools 2009 Rating System. This presentation discusses the acoustical requirements and available credits in LEED for Schools 2009, and the most direct, cost-effective methods for achieving compliance. Future direction for classroom acoustics in green design, implications arising from poor classroom design, and possibilities for acoustics in Innovation in Design and other credits will also be discussed.

SESSION II

TH C7 CHANGING PRACTICE: THE BIM BOOM - JOIN THE COLLABORATION REVOLUTION AN IPD CASE STUDY, 1:30-3:00pm MICHAEL LEFEVRE & MICHAEL RUIZ

Share a future vision design and construction collaboration. See real-project BIM case studies by an early-adopter Construction Manager / General Contractor. In this presentation, Holder Construction Company shares their experiences in transforming the industry using Building Information Modeling with leading design firms, owners, and trade contractors during all project phases. Examples from Planning, Design, Preconstruction, Construction and Operation are presented, including Options Analysis, Coordination Drawings, 4D Phasing, Collision Detection and Facility Management using BIM. MEP systems coordination, collision detection, site and environmental analysis, and energy efficiency analysis are discussed, as are implications of BIM on integrated practice, contracts and delivery systems. BIM Savings metrics are shared and industry trends, best practices, lessons learned and advice are offered to get your organization over the BIM Wall.



SEMINARS

Thursday, October 1

SESSION II

TH C8 CASH FLOW – THE FUEL THAT KEEPS YOUR PRACTICE RUNNING, 1:30-3:00pm WAYNE OWENS, CPA

As a project-driven and often times difficult to management business, an architectural practice can present numerous scenarios for uneven cash-flow development. Additionally, while the service and design-oriented nature of architects is wonderful for their clients, their focus may not be 100% on financial matters related to their firm. They can easily overlook the steps that should be taken to insure the long term success of their practice. Assuring that cash will be available when needed is key to business survival and for an architectural firm cash flow management is critical, especially in the current economic climate. Participants will learn why good cash flow is so essential particularly considering the current state of the economy and the top causes of negative cash flow inherent in the practice of architecture including salaries, consultants and project phasing/billing. Additionally, processes and tools will be given for the participant to take back to their practice to improve their cash flow.

SESSION II

TH C9 GREEN BUILDING POLICY: BUILDING MOMENTUM AND CREATING NEW OPPORTUNITY, 1:30-3:00pm JASON HARTKE

At all levels of government, policymakers are developing and adopting green building policies that are accelerating green building in the marketplace. Jason will talk about the status of green building policy at all levels of government and how green building advocates are influencing adoptions as well as producing new policy opportunities.

SESSION II

TH C10 USING INTEGRATED PROJECT DELIVERY TO ACHIEVE HIGH PERFORMANCE BUILDINGS, 1:30-3:00pm RENEE HUTCHESON & GINGER SCOGGINS

In today's world everyone is talking about sustainability and protecting the environment. In the US, buildings account for roughly 40% of all energy consumption. The way that we design our buildings today will have a long-lasting impact on future energy use. For this reason, clients and the public have new levels of expectations for Architects to design more energy efficient buildings than ever before. To achieve these goals requires a new way of approaching the design process. Additionally, a brief discussion of North Carolina legislative initiatives requiring better performing buildings will be covered, as well as some basic design tools to help achieve these goals. By having both an Architect and Mechanical Engineer jointly make this presentation, the interplay of these two design professions and how integrated design process can have a positive effect on projects goals will be highlighted.

SESSION III

TH C11 ALTERNATIVE HOUSING MODELS: STRATEGIES FOR SUSTAINABLE COMMUNITIES DISCOVERED BY THE AIA COMMITTEE ON DESIGN, 3:30-5:00pm MIKE MENSE & TOM HOWORTH

Denmark's King Christian IV built modern housing for the sailors in his Navy in Copenhagen in the 1600's. San Diego has seen an explosion of new and radical housing downtown. The Netherlands, on the other hand, has been building suburbs faster than the U.S. did in the 50's. The AIA Committee on Design (COD) has visited all of these places and others in the last 10 years. Armed with hundreds of outstanding images created by members of this AIA Knowledge Community, two current leaders of the COD, Tom Howorth, FAIA, of Oxford, Mississippi, and Mike Mense, FAIA, of Anchorage, Alaska, will illustrate and explain the alternative housing models they have discovered. In many American communities, it is hard to imagine that there might be undiscovered and sustainable housing models. Considering these "foreign" models will also illuminate the fit between American housing and culture. Participants will go back to their home communities with a significantly expanded repertoire of solutions to housing problems and greater abilities to judge the appropriateness of solutions and advocate for apparently appropriate and sustainable solutions.



SEMINARS

Thursday, October 1

SESSION III

TH C12 THE MINIMUSEUM OF RICHARD MCMAHAN: DIGITAL INTEGRATION OF DESIGN AND PRODUCTION, 3:30-5:00pm ROBERT MILLER



The MINImuseum of Richard McMahan was an exhibition of over 1100 works of miniature art in the Piccolo Spoleto Invitational Exhibition (16 May-30 June 2008). Curated by the Halsey Institute of Contemporary Art and set in the Rotunda of the Addlestone Library at the College of Charleston, the exhibition was designed and built in one semester by the Clemson Architecture Center in Charleston (CAC.C). This is the amazing story of a design/build project in which laser technology used for making models was ported to execute full-scale fabrication with a CNC router. This show was the first to make public his vast collection. Ten students and two professors first mapped and organized the works; then designed and built a single snaking wall to contain and showcase them. This presentation will cover the programming, design, execution, and final exhibition that was awarded one of three national ACSA Creative Achievement Awards in 2008.

SESSION III

TH C13 THE HIDDEN RISKS OF GREEN BUILDINGS: WHY BUILDING FAILURES ARE LIKELY AND HOW TO AVOID THEM, 3:30-5:00pm RICHARD SCOTT

There is strong evidence to suggest that a direct correlation exists between innovative design and building failures, especially failures related to moisture intrusion problems and envelope failures, especially failures related to moisture intrusion problems and envelope failures. Since the very nature of green construction involves innovation (and to some degree, experimentation) it also introduces an increased risk of building moisture problems. This presentation will identify:

- The most likely causes of building failures in innovative and complex buildings
- A series of guidelines, computer models, and checklists to avoid these problems
- The selective use of monitoring and documentation to identify building performance deficiencies before they result in significant problems
- Case studies of successful and problem buildings will be discussed that identify what made the successful buildings "work" and why the problem buildings "failed."

SESSION III

TH C14 HIGH-PERFORMANCE BUILDING DRIVERS – A PRIMER, 3:30-5:00pm MIKE BARCIK & CANDICE GROVES, AIA

Normally offered as an 8 hour course, Southface will distill the essence of what makes a building "High Performance." Energy efficiency, water-conservation, and using resources wisely all go into green building. But – how architectural and engineering systems work together all contribute to the overall performance of a building and can take that design to the next level. Durability and moisture design issues will also be covered -- benefiting ANY facility built in our region. This primer will give you the foundation for designing your next building in the southeast to perform at its best. You will not want to miss this information-packed session!

SESSION III

TH C15 GUILFORD COUNTY: HIGH PERFORMANCE SCHOOL CASE STUDY, 3:30-5:00pm MIKE NIKLAS & BAE-WON KOH

This session presents the case study of Northern Guilford Middle School, a 140,000 square foot middle school located just north of Greensboro, North Carolina. The facility is the result of a comprehensive, well-integrated sustainable design strategy and utilizes several advances in sustainable school design. In 2007, Northern Guilford Middle School won the Sustainable Industry Building Council's Beyond Green™ award for Best Sustainable School in the country. This session will discuss the many sustainable features of the facility, including:

- A never before used daylighting strategy;
- A rooftop rainwater collection system;
- Wastewater treatment by an environmentally friendly, plant-based, tidal Living Machine;
- An under-floor air distribution system that enhances comfort, air quality, flexibility, and energy-efficiency;
- Solar hot water heating for the cafeteria's needs;
- A functioning greenhouse;
- Educational courtyards; and
- Incorporation of extensive experiential learning components both inside and outside the school.



TOURS

Thursday, October 1

TH **FURMAN UNIVERSITY'S COMMITMENT TO SUSTAINABILITY,**
TI **12:30-5:30pm** 4.0 LU/HSW/SD • \$30

Explore the beautiful and sustainable campus of Furman University. With its commitment to sustainability through its buildings as well as its curriculum, Furman University has set itself apart as a leader in the 2030 initiative. It boasts the first Gold Certified LEED building in South Carolina (Hipp Hall) as well as an authentic Japanese Buddhist Temple that was dis-assembled in Japan and re-assembled by skilled Japanese carpenters on Furman's campus. TRANSPORTATION PROVIDED. Travel Time to Tour: 30 Minutes.



TH **BILTMORE ESTATE – BEHIND THE ARCHITECTURE,**
T2 **10:30-6:00pm** 2.5 LU/HSW • \$65

Explore the architectural intricacies of Biltmore and much more in this behind the scenes tour of the stately Asheville, North Carolina home designed by Richard Morris Hunt. Take in the magnificent view from the roof at the top of the Grand Staircase. Transportation, lunch and other amenities will be provided TRANSPORTATION PROVIDED. Travel Time to Tour: 1.5 Hours.

TH **HUBBELL LIGHTING: BEHIND THE SCENES,**
T3 **10:30-12:30pm** 1.5 LU/HSW/SD • \$25

Hubbell Lighting's new four-story, 185,000sf LEED ® Silver certified headquarters brings together Hubbell Lighting's 16 distinct brands into a single building which contains energy-efficient lighting fixtures and daylight-harvesting and occupancy-sensing lighting controls systems that have helped the company save nearly \$150,000 per year. The building received a 2007 Business Week / Architectural Record Citation for Excellence. TRANSPORTATION PROVIDED. Travel Time to Tour: 15 Minutes.



TH **AMBITION, SUSTAINABILITY & DESIGN: CLEMSON'S ICAR CAMPUS,**
T4 **2:00-5:00pm** 2.5 LU/HSW/SD • \$25

The Clemson University International Center for Automotive Research (CU-ICAR) is an advanced-technology research campus representing the ultimate public/private partnership where academia, industry and government organizations engage in synergistic collaboration. Come learn about the 250 acre campus and the designs behind one of the densest concentrations of LEED buildings in the southeast. TRANSPORTATION PROVIDED. Travel Time to Tour: 15 Minutes.

** Buses board 15 minutes prior to scheduled departures. Buses WILL DEPART at times shown.*

TOURS

Thursday, October 1

TH **BMW PLANT TOUR,**

T5 **A: 10:30-1:00pm, B: 12:30-3:00pm** 1.0 LUs • \$30

See how BMW Manufacturing builds every X5 and X6 to be shipped around the world. From the initial weld to the final inspection, here you can see the entire production process that all vehicles must go through before they meet the open road. Here you can see the state-of-the-art manufacturing processes that make BMWs some of the highest-quality vehicles on the market. TRANSPORTATION PROVIDED. Travel Time to Tour: 20 Minutes.



TH **GREENVILLE SCHOOL FACILITIES TOUR,**

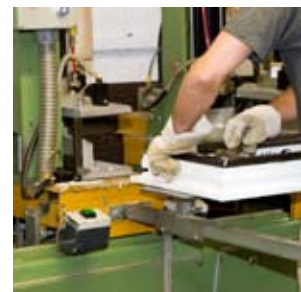
T6 **2:00-5:00pm** 2 LUs • \$35

Thanks to a comprehensive investment in school facilities over the past decade, students in the Greenville County School System attend some of the most-advanced schools in the state. Come take a look at some of the newest facilities that South Carolina has to offer. TRANSPORTATION PROVIDED. Travel Time to Tour: 15 minutes.

TH **FORCE V, ENVIRONMENTAL PLANT TOUR**

T7 **1:45-5:15pm** 2.0 LU/HSW/SD • \$25

Join us for a tour of the new, state-of-the-art factory in Clinton, SC where they make Force V Environmental standard and custom-replacement vinyl windows and doors. Force V's excellent thermal properties are because of the specially designed, triple pane insulated airspaces, low conductivity of the frames, TPS MAXX for gas retention and many other impressive qualities. During this brief tour you will see how Force V Environmental windows and doors are made and then stay for a 1 hour seminar "Vinyl in Design / Solutions to Today's Design Challenges". TRANSPORTATION PROVIDED. Travel Time to Tour: 1 Hour.



TH **BROAD MARGIN: WALK WRIGHT IN,**

T8 **A: 10:30-12:30pm, B: 1:30-3:30pm** 1.5 LUs • \$25

Broad Margin is a 1,727 sq. ft. home designed by Wright in 1951 for Misses Gabrielle and Charley Austin. One of only two FLW designs in South Carolina, Broad Margin is a prime example of a Unisonian Home with its environmentally conscious native materials; a flat sloping roof and large cantilevered overhangs for passive solar heating and natural cooling; radiant-floor heating; and a strong visual connection between the interior and exterior spaces. The home is one of only 19 houses nationwide with Wright's initials written in a tile outside the front door. TRANSPORTATION PROVIDED. Travel Time to Tour: 15 Minutes. Tour limited to 24 people.

* Buses board 15 minutes prior to scheduled departures. Buses WILL DEPART at times shown.

EVENTS

Thursday, October 1



EXHIBITOR RECEPTION, 5:00-6:30pm

Come and welcome our exhibitors and enjoy fun and fellowship with your colleagues as we officially open the SAR 2009 exhibit hall! In addition to the numerous exhibitors, we have chosen to take advantage of the largest exhibit space in South Carolina and invite regional artists to display and sell their work throughout the hall. It is important that we recognize the sacrifice many of our exhibitors and sponsors have made to support our conference during these challenging times and that we show our appreciation and thanks for making our conference possible.



AAH KNOWLEDGE COMMUNITY: ARCHITECTURE FOR HEALTH FORUM, 5:00-6:00pm

This session is organized to explore interest in establishing a South Atlantic Regional committee or working group in Architecture for Health. The AIA Academy of Architecture for Health Knowledge Community at the national level is interested in connecting with and supporting regional, state and local groups within the AIA interested in this area of professional practice. In addition to identifying general interest, this session will be used to identify topics of specific interest regionally that might be covered. It will also seek to identify potential regional forum leaders and liaisons with the national AIA Academy of Architecture for Health.



ARCHITECTURE FOR MINISTRY, 5:00-6:00pm

This session is organized to explore interest in a regional knowledge community committed to exploring their role on the built environment in Christian worship and ministry. The vision of Architecture for Ministry is to encourage discussion and learning among design and building professionals, their consultants and ministry leaders.



CUSTOM RESIDENTIAL ARCHITECT NETWORK (CRAN) FORUM, 5:00-6:00pm

This session is to get the word out to the residential architects in our region about CRAN which has for the past five years been supported under the AIA as sub-committee of the Housing and Custom Residential Committee. The purpose of this knowledge community is to inform the AIA on the needs of the residential and small practice architects. Many have felt in the past that the AIA wasn't relevant to their practices. This has started an important dialog. Several National CRAN conferences have taken place but still many in the profession are unaware of this important conduit to the AIA. Join us for an informative presentation and round table discussion on CRAN and how it can re-energize our residential practices through shared experiences.

EVENTS

Thursday, October 1



DINING BY DESIGN - UPSTATE SC STYLE, 7:00-9:00pm

AIA Greenville has handpicked some of the city's best restaurants to create an exclusive and unforgettable experience. Come join us as several local firms open their doors to host pre-dinner receptions. 1. Craig Gaulden Davis & High Cotton - \$60 per person OR Rick Erwin's - \$60 per person, 2. Design Strategies & Deveraux's - \$75 per person, 3. DP3 Architects & Northampton Wines - \$80 per person, 4. Johnston Design Group & Oysters on the West End - \$40 per person, 5. Neal Prince Architects & Brown Street Jazz Club - \$65 per person, 6. Pazdan-Smith Architects & The Lazy Goat - \$55 per person, 7. Clark Patterson Lee & Liberty Tap Room - \$40 per person • Limited to 30 persons per location. • Appropriate dinner attire is requested.



PUB CRAWL, 7:00-9:00pm

TH DD9

Please join us for an event to socialize and meet new colleagues from around the Region as we walk between several local pubs. The theme may as well be "where everybody knows your name" since we're stopping for food and drinks at some of Greenville's most well-known hot spots -- Liberty Taproom & Chicora Alley -- for an evening of fellowship and fun. • Tickets are \$35, see registration. • Limited to 30 persons. • Beginning Location: Liberty Taproom, 941 South Main Street, Greenville, SC 29601.



FELLOWS RECEPTION, 7:00-9:00pm

TH DD10

Please join local and national College of Fellows members for an evening of food and camaraderie as you mingle with the other Fellows in the Region. Celebrate the advancement of members newly inducted into the College of Fellows, as well expand your peer network and share opportunities and challenges at this always popular reception. Located above Soby's on the Side restaurant, this private destination features a unique rooftop patio with breathtaking nighttime views of Greenville. • Tickets are \$40, see registration. • Limited to 40 persons. • Location: The Loft at Soby's, 22A East Court Street, Greenville, SC 29601.



EMERGING PROFESSIONALS NIGHTCAP RECEPTION, 9:00pm-Until

The best way to end the first day of the Conference is to network with the profession's leaders of tomorrow, AIA Emerging Professionals! Please join us at the Loft at Soby's in the heart of downtown Greenville at the AIA Emerging Professionals nightcap reception to mingle with colleagues and to partake of potent potables and desserts. The event will be a great opportunity for Students, Associates, Young Architects and their Mentors to network with fellow colleagues from around the Region. Located above 'Soby's on the Side' restaurant, this private destination features a unique rooftop patio with breathtaking nighttime views of Greenville. • Tickets are \$10, see registration. • Limited to 100 persons. Location: The Loft at Soby's, 22A East Court Street, Greenville, SC 29601.

DINING BY DESIGN

Thursday, October 1, 7:00-9:00pm



CRAIG GAULDEN DAVIS

HIGH COTTON

TH DD1

High Cotton is an inviting place to relax and enjoy hospitality at its best. The cuisine is unabashedly American, familiar and robust featuring meats, game and fresh fish - no confetti on the plates or in the descriptions. Like Bess said, "...the fish are jumpin' and the cotton is high." Life is good even if it's not always fair. And after a great piece of perfectly cooked meat or fish and a glass of wine, it begins to look even better.

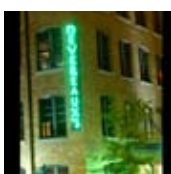


CRAIG GAULDEN DAVIS

RICK ERWIN'S

TH DD2

Our menu is based on a tradition of classic steak and fresh seafood. In addition to serving all of the traditional cuts of beef, always to your specifications, we also offer unique nightly features such as Kobe and Tomahawk. For those interested in lighter fare, we are proud to offer an array of seafood, all arriving fresh daily. Top off your evening with a delicious dessert. Rick Erwin's was recently named one of the Top 50 Restaurants in the US by opentable.com



DESIGN STRATEGIES

DEVEREAUX'S

TH DD3

Chef Steven Devereaux Greene's "no boundaries" menu features a mix of new-age and southern classics, put together with passion and artfully presented. The Devereaux's team had the honor of showcasing their talents at the James Beard House in January 2006. Greene and his team work in an open-air kitchen, allowing the guests to get a front row seat in the culinary magic.



DP3 ARCHITECTS

NORTH HAMPTON WINE CAFÉ

TH DD4

This restaurant developed from Northhampton's much-applauded wine shop and is a natural outgrowth of its focus on quality goods. The bright, narrow space is quiet and decidedly unpretentious, so it's a great place for a date or a low-key celebration. The menu boasts dishes such as roasted pheasant, ale-braised rabbit, coriander-crusted tuna loin, and twin tournedos with basil pesto duxelles.



JOHNSTON DESIGN GROUP

OYSTERS ON THE WEST END

TH DD5

Oysters on the West End brings a taste of the Lowcountry home to Greenville. Oysters is a wonderful place to relax, let your hair down, and enjoy a night out in the West End on our rooftop patio. From the famous Shrimp and Grits to our B.Y.O.B. (Build Your Own Boil), we are sure that everyone will find a new favorite to keep you coming back for more.



NEAL-PRINCE ARCHITECTS

BROWN STREET CAFÉ

TH DD6

The Brown Street Club is a cozy refined jazz & fine dining restaurant located in the heart of downtown Greenville, SC. We are in the bottom floor of the historic Brown Street Antiques building just off of Main Street. The Brown Street Club's décor and atmosphere will give you the feeling of stepping back in time to the days of America's Great Jazz Age.

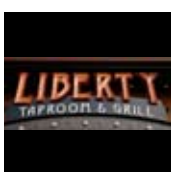


PAZDAN-SMITH ARCHITECTS

THE LAZY GOAT

TH DD7

A dining experience designed around taking your time, and sharing great food and stories, The Lazy Goat is an escape wrapped in succulent flavors from all around the Mediterranean. Guests are invited to leave behind responsibility and worry while they try a little bit of this and a little bit of that - or a whole lot of whatever they like. Whatever your pleasure, The Lazy Goat is truly time well wasted.



CLARK PATTERSON LEE

LIBERTY TAP ROOM

TH DD8

It is a celebration of America's melting pot of rich ethnic cooking styles. It is a celebration of the resurgence of the "handcrafted-brewing" style of the pre-prohibition small American brewery. So bring us your hungry, your thirsty and fun-loving, we'll send you home refreshed and fulfilled.